


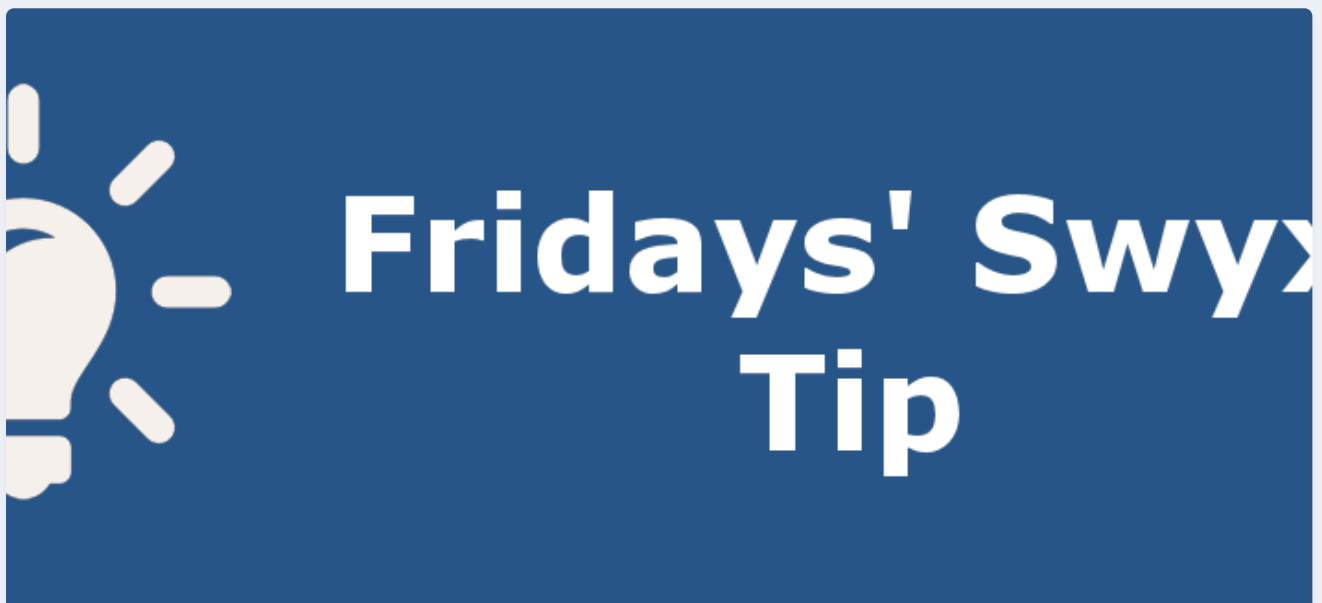


- Fridays' Swyx Tip
- 
- 

Fridays' Swyx Tip

 A group blog by Mirjam Baumberger in General



Fridays' Swyx Tip #47: Wrap-up time



Entry posted by Tom Wellige September 4, 2020

1,827 views

From 2009 to 2011 [mirjam baumberger](#) wrote a great blog, the "**Fridays' Swyx Tip**". Every Friday she posted a tip regarding the usage of SwyxWare and connected tools and devices. As the old forum is offline this article series will be restored here again over the time. Please note that some information in this article series might not be valid anymore with current SwyxWare versions.

This blog article was originally posted on 20.05.2011 04:15

Dear Swyx Users

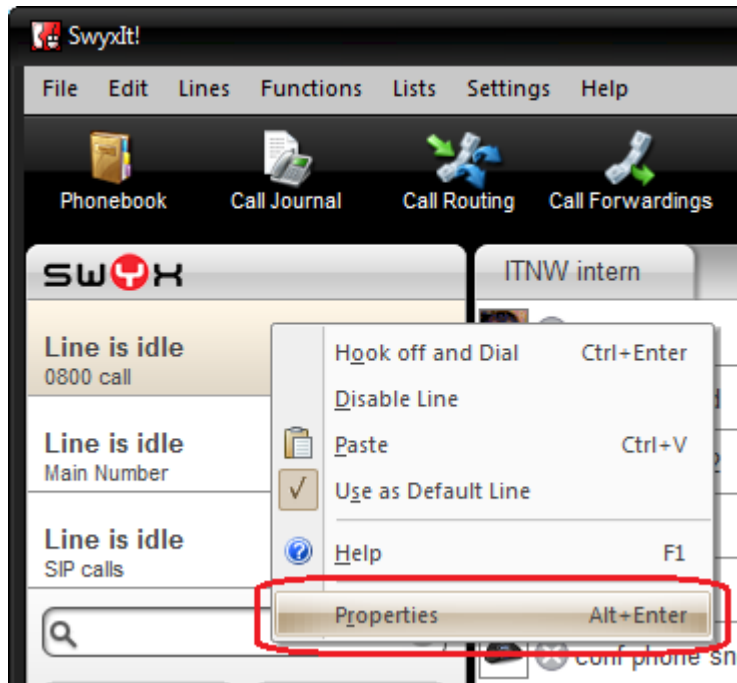
Did you know that the SwyxIt! soft-phone allows you to set a "wrap up timer"?

If you are asking yourself now what exactly is a "wrap-up timer", here the answer:

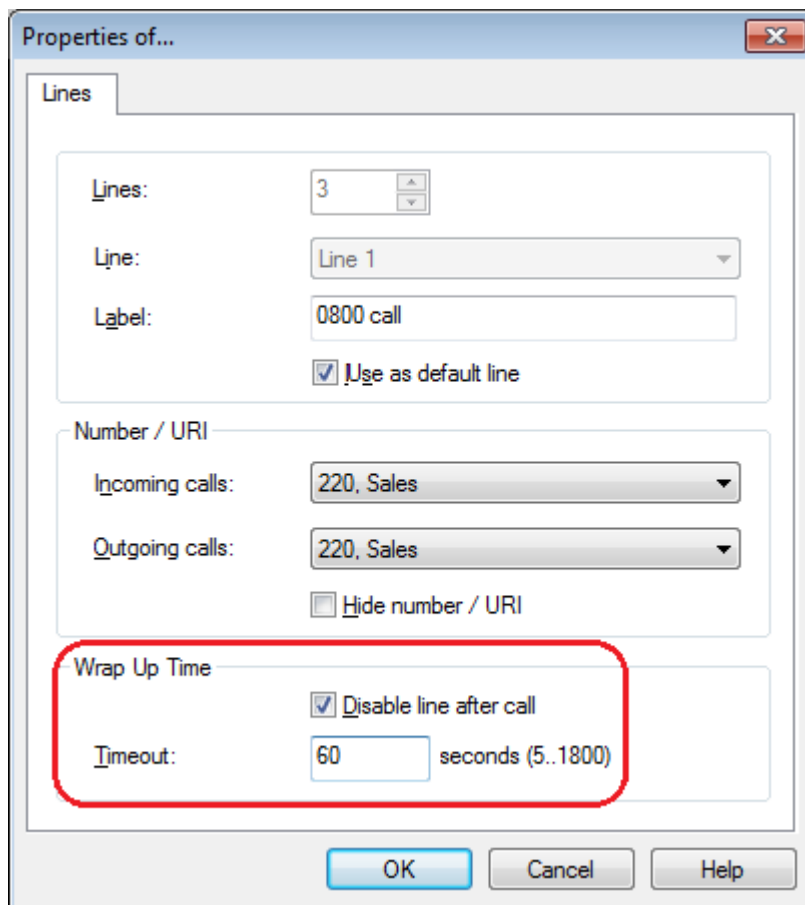
The "wrap up timer" prevents further calls from coming through, therefore letting the you complete additional tasks related to the previous call without being disturbed.

This is how you configure the "wrap up timer" per line key:

1. Click with the right mouse button on the selected Line button and select "Properties"

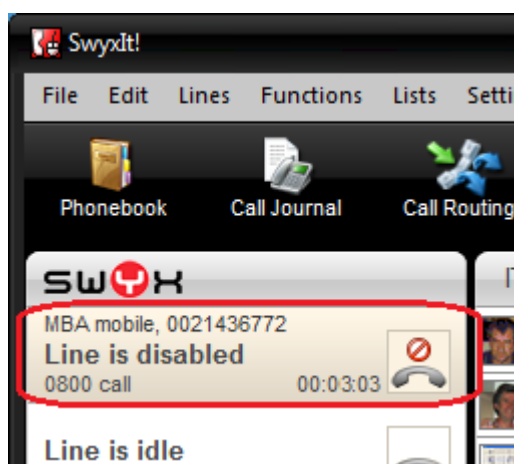


2. The "Properties of..." window will appear, now activate the option "Disable line after call" and define a time period (5 – 1800 seconds)



3. Confirm your input by clicking on "OK".

All done. The line will now be disabled after every call for the time period defined. And your SwyxIt! line key is then busy for further incoming calls. After the "wrap up time-out" is reached your Line key goes to "ready" status immediately.




Have a good weekend and happy Swyxing...

Regards

Mirjam

@ IT Net World Ltd, NZ & AUS SWYX Distributor

<http://www.itnetworld.co.nz/>

 Share

Followers

1

< Previous entry
Fridays' Swyx Tip #46: Feature Code Intercom

Next entry >
Fridays' Swyx Tip #48: DND - Advanced DDI Routing

0 Comments

There are no comments to display.

Create an account or sign in to comment

You need to be a member in order to leave a comment

Create an account

Sign up for a new account in our community. It's easy!

[Register a new account](#)

Sign in

Already have an account? Sign in here.

[Sign In Now](#)

Theme ▼

Copyright (c) 2007-2025 by Tom Wellige
Powered by Invision Community